



PRODUCT GUIDANCE



STATIC BANNER STANDS



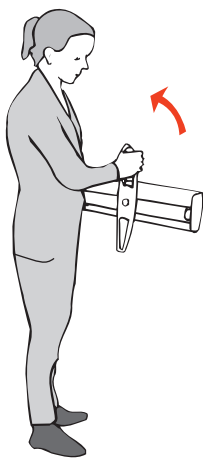
LINKWALL FLEXIBLE DISPLAY SYSTEM

Description

The LinkWall Flexible Display System allows for the ultimate flexibility to meet the needs of your event space. Simply change the shape by bending it to fit your location. The size is changed by adding or removing panels.

It is a patented solution with a combination of LinkWall Banner Stand and LinkWall Flexible Panel in between, connected with a magnetic solution. The LinkWall Flexible Panel has a rubber profile, which enables you to change the shape of your wall. Combine any 2 LinkWall Banner Stands with a LinkWall Flexible Panel to create your LinkWall configuration.

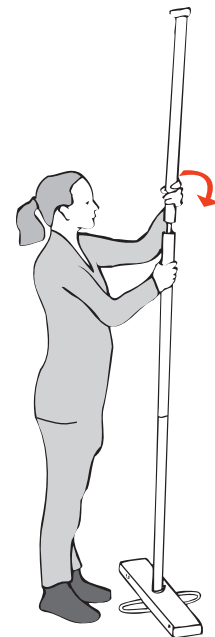
Set up LinkWall Banner



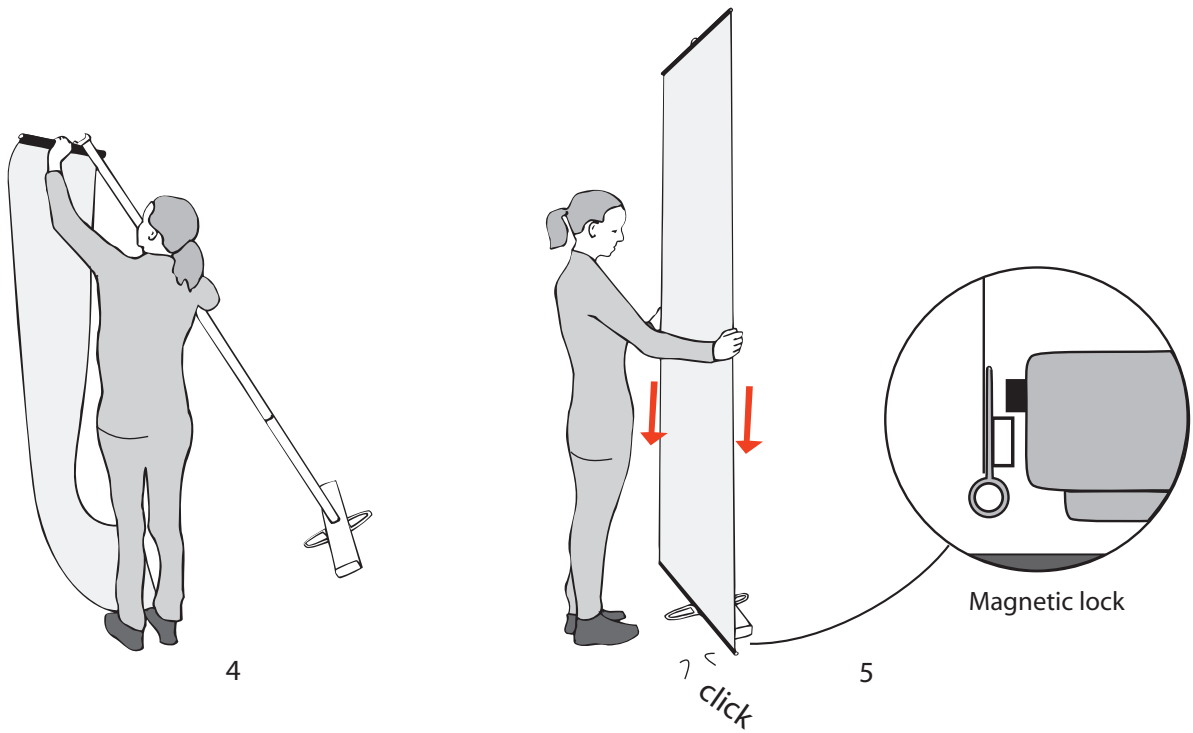
1



2

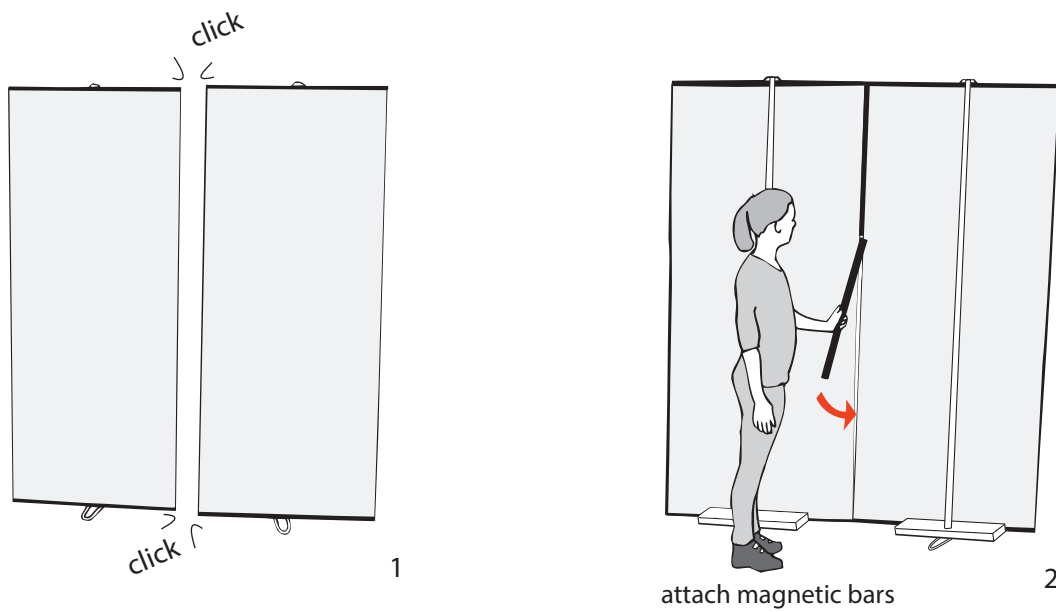


3



Set-up without flex link panel
 (for taller versions a ladder is recommended)

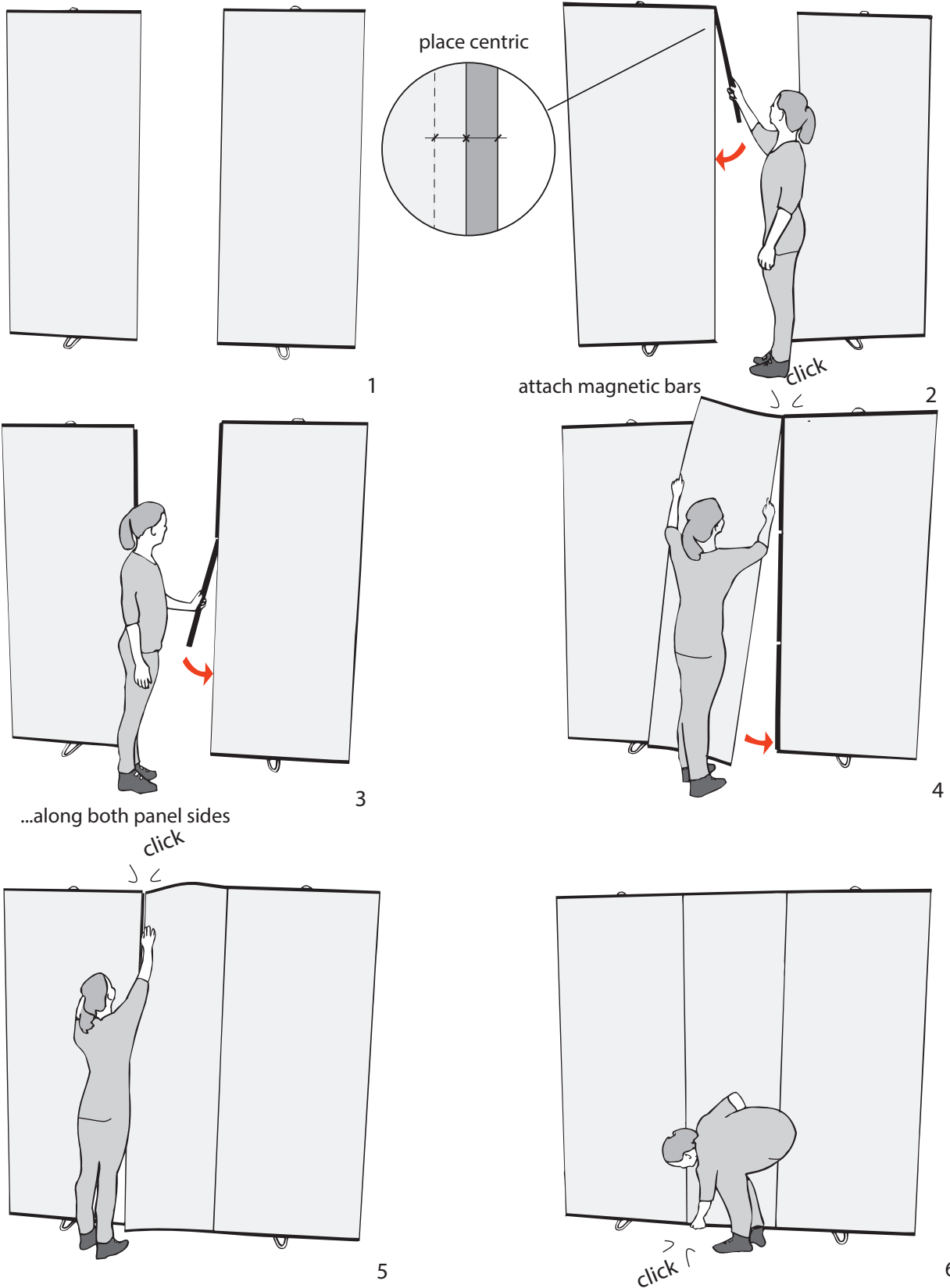
220 cm height



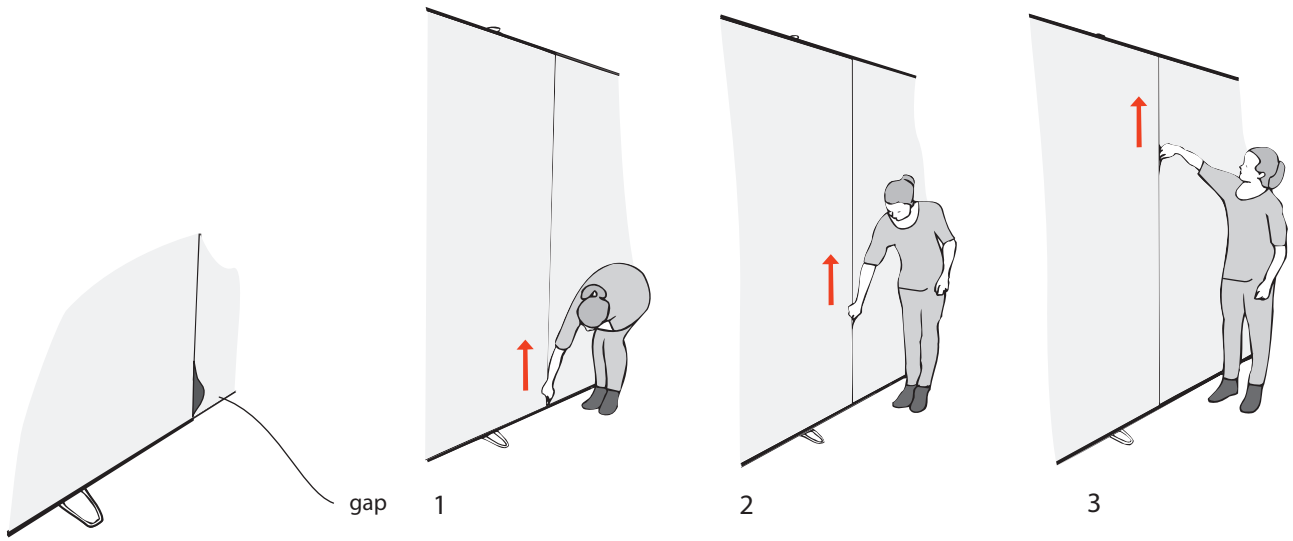
Set-up with flex link panel

(for taller versions a ladder is recommended)

220 cm height

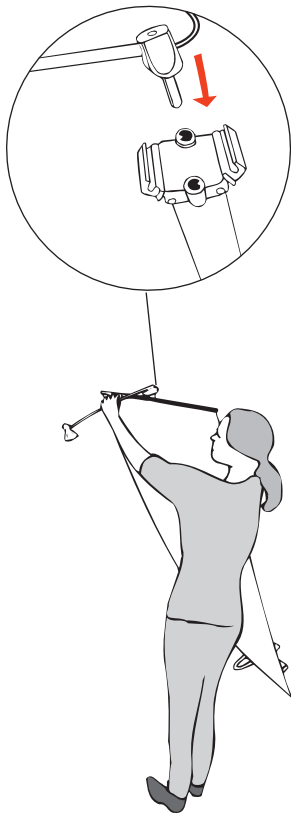


How to align graphics

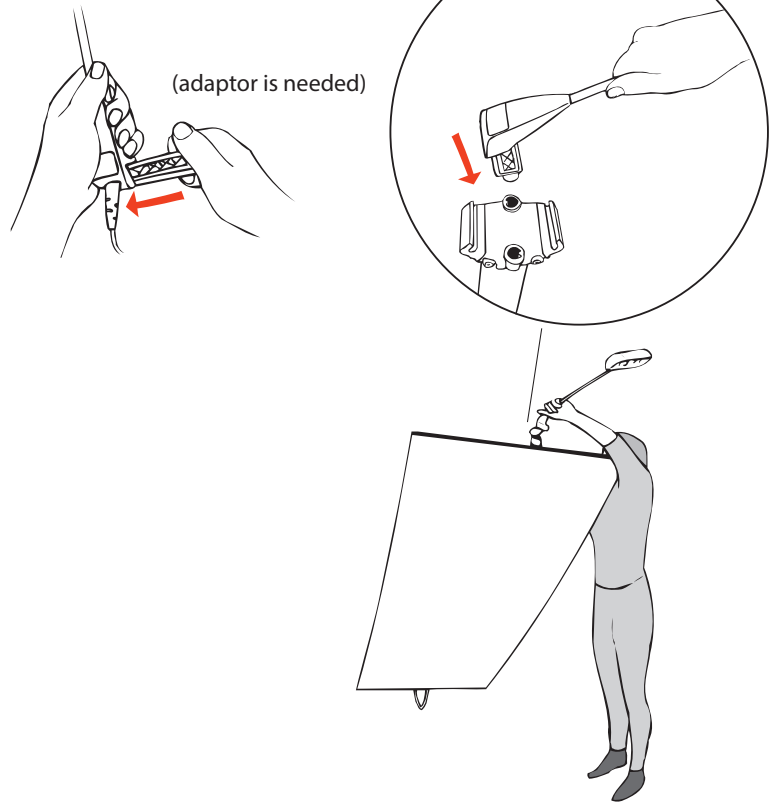


Attaching spotlights

Expand Spotlight 50W



Expand Spotlight 150W/LED





TWINBASE FABRIC BANNER STAND

Description

Aluminium construction, fabric graphics and soft carry cases mean that complete Twin Base Fabric Banner Stand can weigh as little as 1.5kgs. Being compact and lightweight makes it ideal for international exhibitions with few simple parts clicked together and you are ready.

Product Features:

- Overall height: 2100mm
- Graphic height: 2000mm
- Single and double sided
- Quick change graphic facility
- Extremely portable
- Incredibly Lightweight



TWINBASE XL FABRIC BANNER STAND

Description

The Fabric Graphic Wall uses 3 (4500mm wide) or 4 (6000mm wide) TwinBase XL Stands to support one wide continuous graphic. The aluminium bars are hinged together and simply open out ready to be displayed, this allows for a totally seamless graphic.

Huge impacting graphics
Lightweight and portable
Seamless printing options

